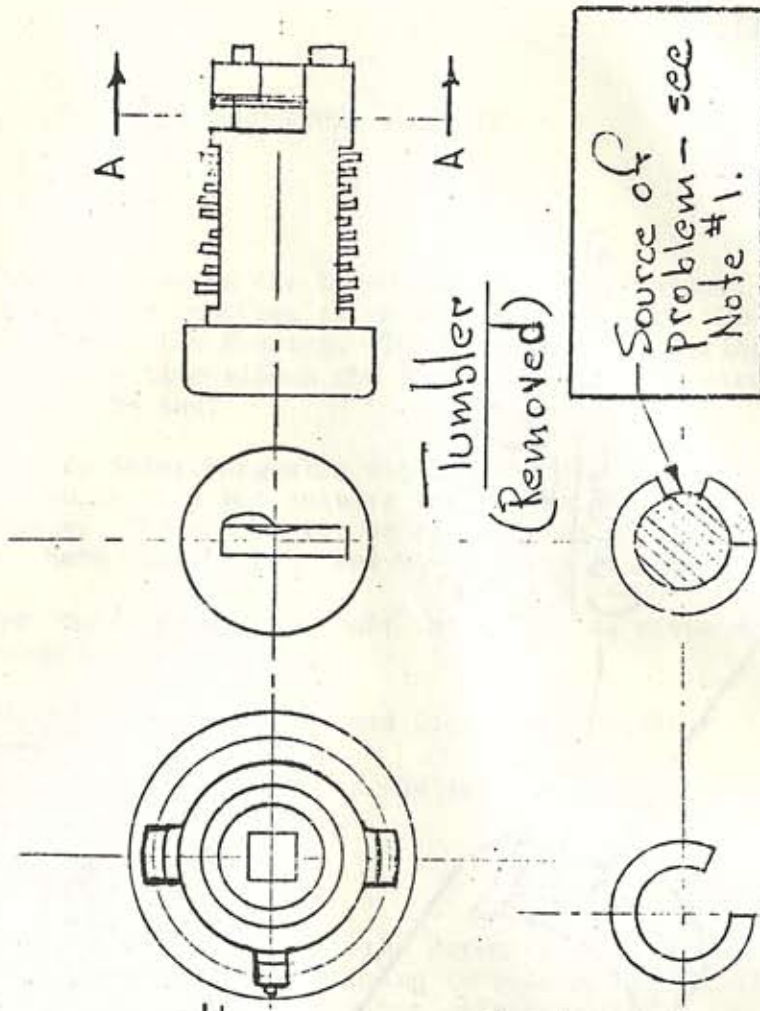
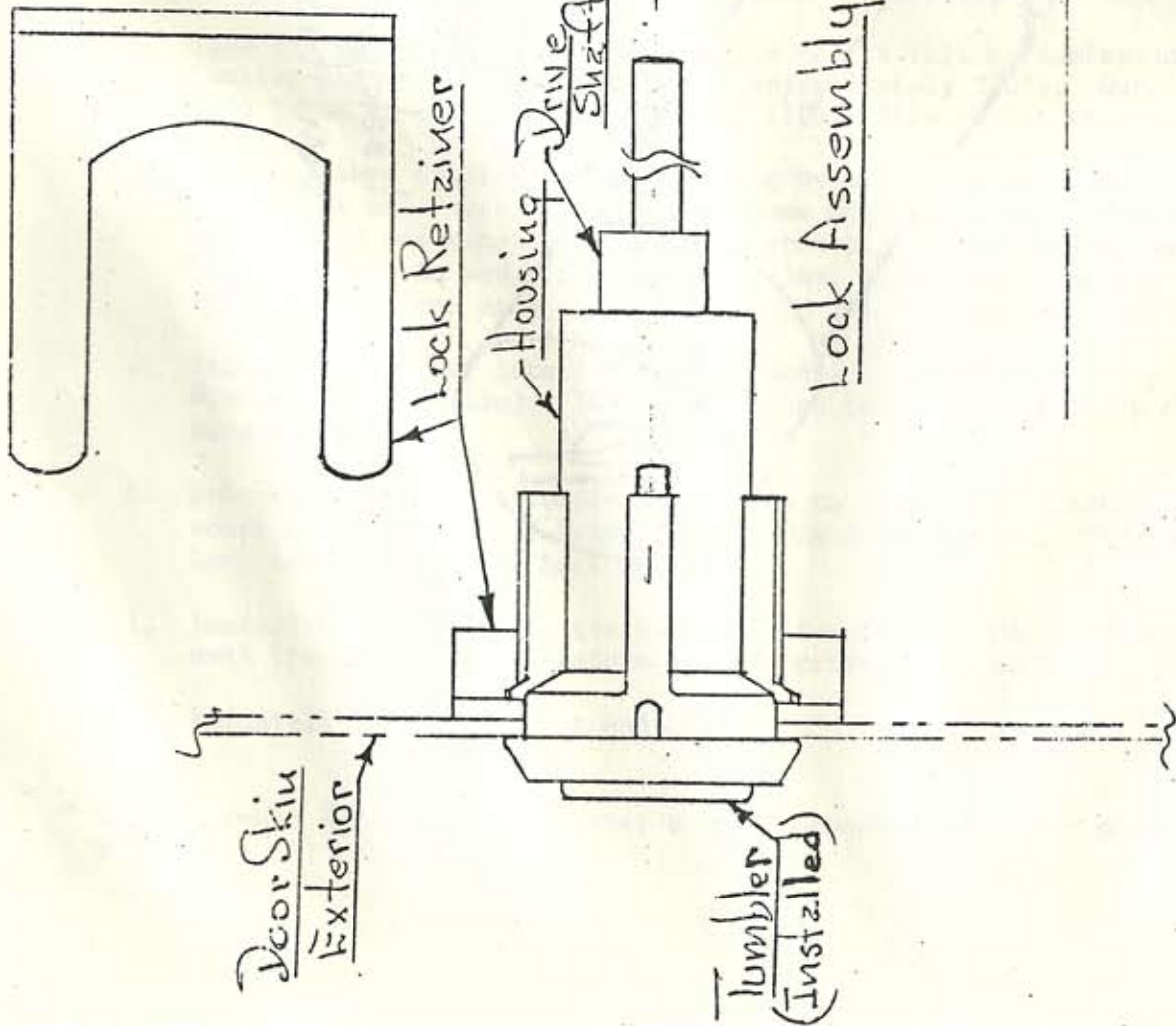


## REPAIRING FRONT DOOR LOCK

## NOTES:

1. The cutout allows for keying the Drive Shaft to the Tumbler. This cutout leaves a small ridge who's function is to act as a stop for the Spring Clip fastened to the inside of the Housing. The Clip being of spring steel wears the cast aluminum and in time allows the Tumbler to be extracted from the lock assembly housing with the key.
2. The Rambler Lock is interchangeable with this lock. It has an alternate Drive Shaft design which does not require the cutout and therefore is expected to increase use value. The end of the square section of the shaft must be cut to proper length. Have Tumbler adjusted to your key by the locksmith.
3. In the event you care to make a repair the following steps are suggested as one means for accomplishing the task:
  - a. Remove the \*Door Panel, Arm Rest, and Door Latch Handle.
  - b. Move the door insulation forward at the latching mechanism access hole and remove the Lock Assembly Retainer.
  - c. Remove Lock Assembly.
  - d. Remove Tumbler with key -- or lift the detent end of the Spring Clip through the small access in the Housing to release the Tumbler. (This is in case the ridge may still be somewhat effective.)
  - e. Take the Washer Retainer out and file to fit full circumference of the Tumbler groove. (Less than 360° - approximately 330°). Outside Diameter (OD) is OK at 1/2", Inside Diameter (ID) - file to fit groove diameter.
  - f. Insert Washer Retainer into Tumbler groove. Since the Washer can now be moved back and forth in the groove some means of securing the Washer in the desired position shown in the sketch is required. One way is to use a kitchen match to wedge the Washer against the aft face of the groove in two places -- one each side of the void left for the Spring Clip.
  - g. Insert the Tumbler into the Housing and force the Spring Clip over the Washer (forward side). The match pieces can be removed thru the Housing access holes.
  - h. Reinstall the Lock Assembly being sure to align with Exterior Door Skin notch and insertion of Drive Shaft in latch mechanism. Test operation of Lock before inserting Lock Retainer.
  - i. Install Lock Retainer - tie string to Retainer in the event it may drop away from its position before you can drive it in place.
  - j. Reinstall Panel, Arm Rest and Handle.

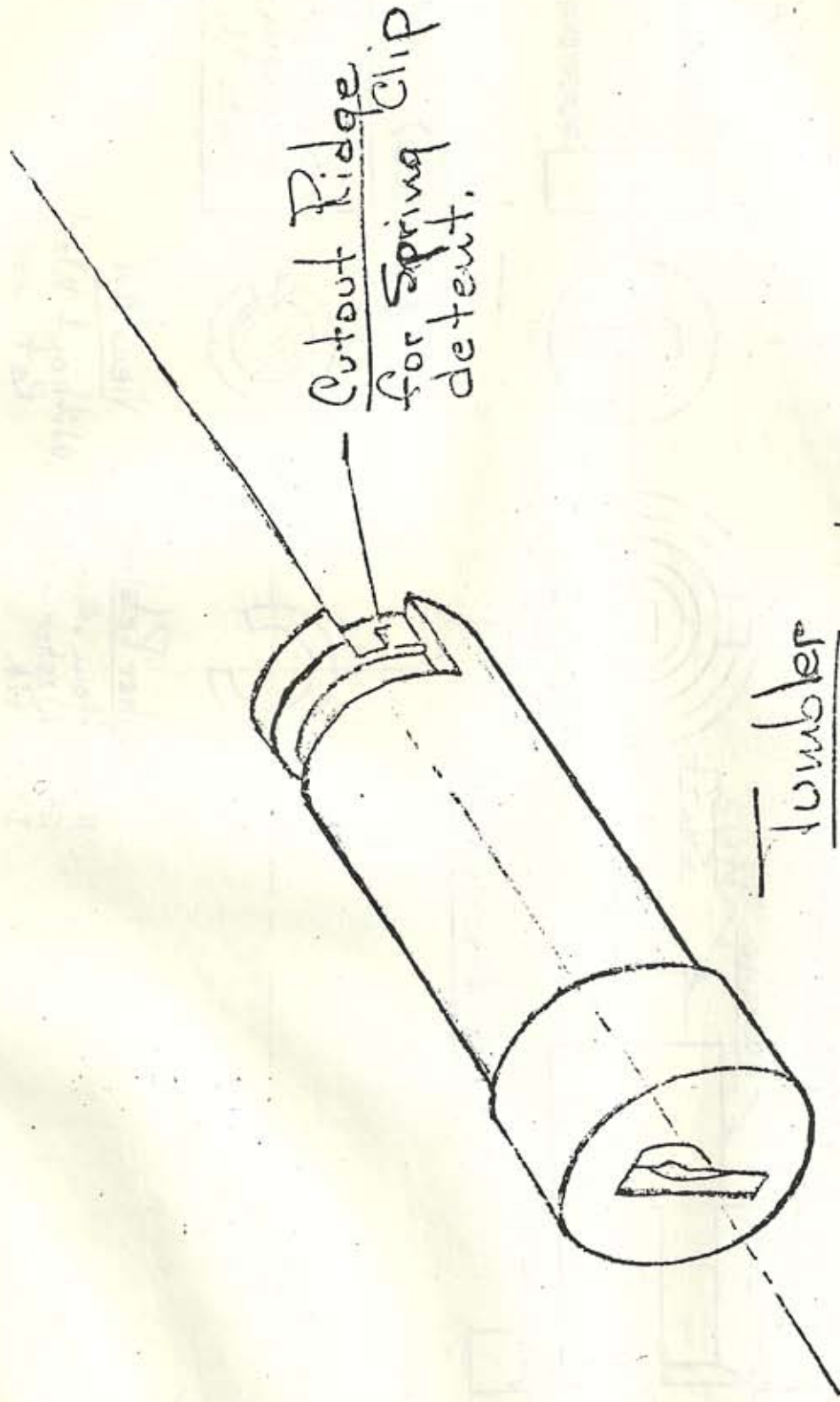
\* No experience on rear door to date; seems reasonable that only minor differences may exist.



Tumbler  
(Removed)

Washer Retainer  
View "AA"  
Make from .016 x 1/2 OD Steel Washer - size I.D. to fit. (Without Washer Retainer.)

Not to Scale  
12-31-69



Cutout Ridge  
for Spring Clip  
detent.

Tumbler

Locking elements  
omitted.

Not to Scale

12-31-69